

Summary of how to access in-patient detox services and/or residential rehabilitation for drug and alcohol users

The following is an explanation of the rationale behind and the process of gaining access to in-patient detox services and/or residential rehabilitation.

Background

Unlike most community drug and alcohol treatment service provision that is free at the point of delivery, residential rehabilitation and inpatient service provision can be very expensive and most people cannot afford to fund their stay without financial assistance. Residential Rehabilitation placements may require either a significant or partial contribution from local authority community care budgets and inpatient detoxification from Primary Care Trust budgets. In North East Lincolnshire the assessment process that allows access to such funds and the funds themselves have been delegated to The Drug and Alcohol Action Team (DAAT).

The NE Lincolnshire DAAT adheres to the NE Lincolnshire Care trust Plus Fair Access to Care Services for Adults (FACS) and guidance issued by The National Treatment Agency (NTA) in respect of access to in-patient detox services and/or residential rehabilitation.

Service users likely to be most suitable for residential treatment and also meet the FACS eligibility criteria are those who -

- Are motivated to achieve lasting abstinence
- Have, or have had medium-to-high dependence on drugs
- Have substance misuse patterns of long duration and a chaotic nature
- Have high levels of need in terms of health and social care issues
- Lack family and community support networks
- Have found it difficult to achieve abstinence in the community
- Need to receive treatment away from their usual drug and alcohol-orientated community or family environment
- Are required as part of a court-ordered drug rehabilitation requirement
- Are unable to sustain in all or most aspects of work and education and learning causing a major loss of independence

All service users considered for rehabilitative programmes that are being treated in the community must have received a drug and alcohol misuse comprehensive assessment that indicates a need for residential treatment.

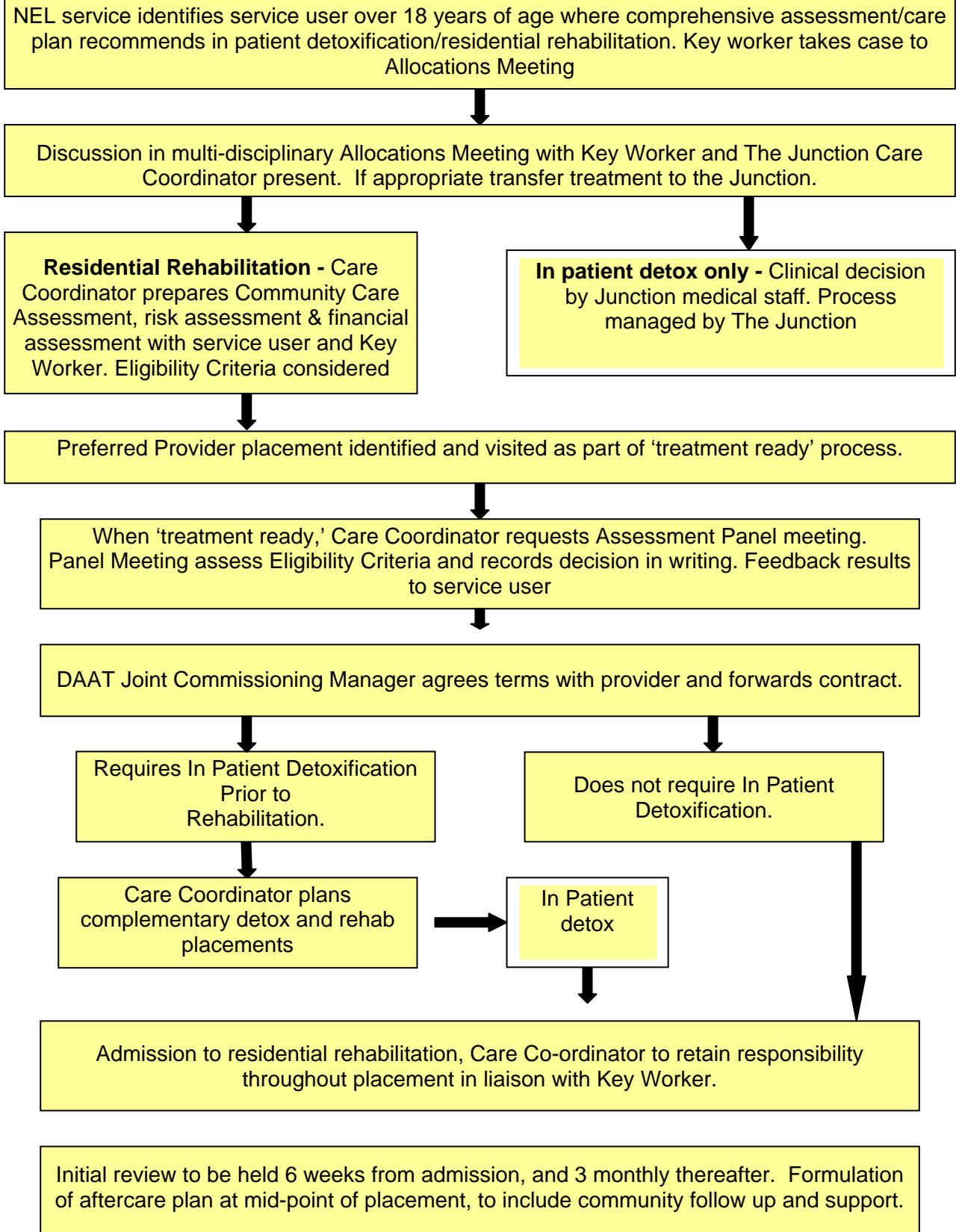
This will be followed by a Community Care Assessment (CCA) that must take account of all of the above indicators and ascertain whether a service user is 'treatment ready' and thereby likely to meet the FACS eligibility criteria.

Where a person considered suitable for residential treatment is in prison there may on some occasions be no Comprehensive Assessment. However a Community Care Assessment must then be prepared to address the eligibility/FACS criteria

The referral process

The flow chart on the next page shows the process for referral for in-patient detox services and/or residential rehabilitation:

North East Lincolnshire Drug/Alcohol Services



If further information is required on this process or any other aspect of accessing in-patient detox services and/or residential rehabilitation please contact the DAAT on 01472 625570.